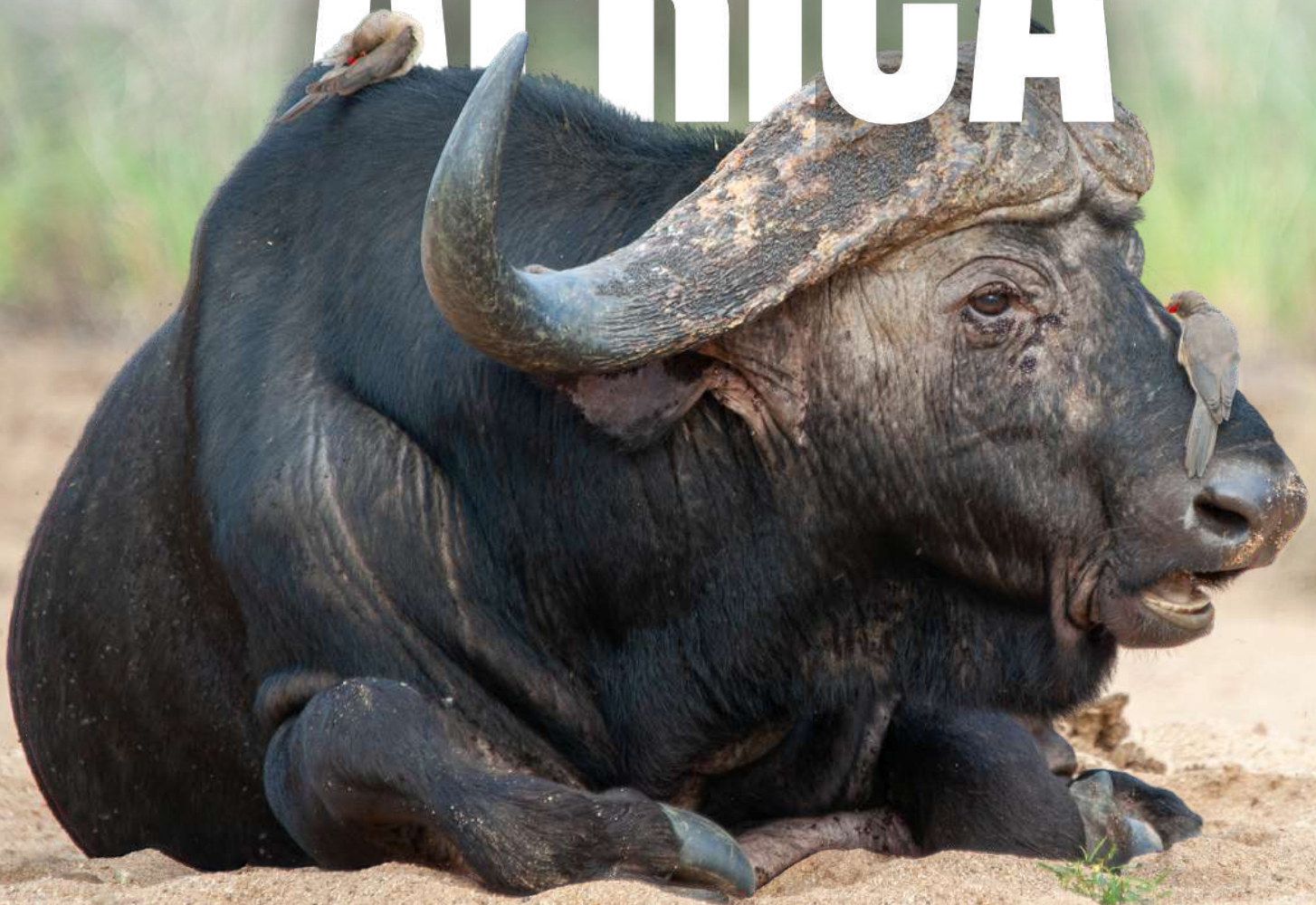




**RW SAFARIS
INTERNATIONAL**

Lets Hunt

AFRICA



Welcome,

RW Safaris International proudly welcomes you to our beautiful lodge in the Limpopo Valley of South Africa, surrounded by our monumental baobab trees and the tranquility of the African bushveld. At RW Safaris International we offer over 25 species to be hunted in areas that are carefully chosen to ensure a successful hunt with top quality trophies.

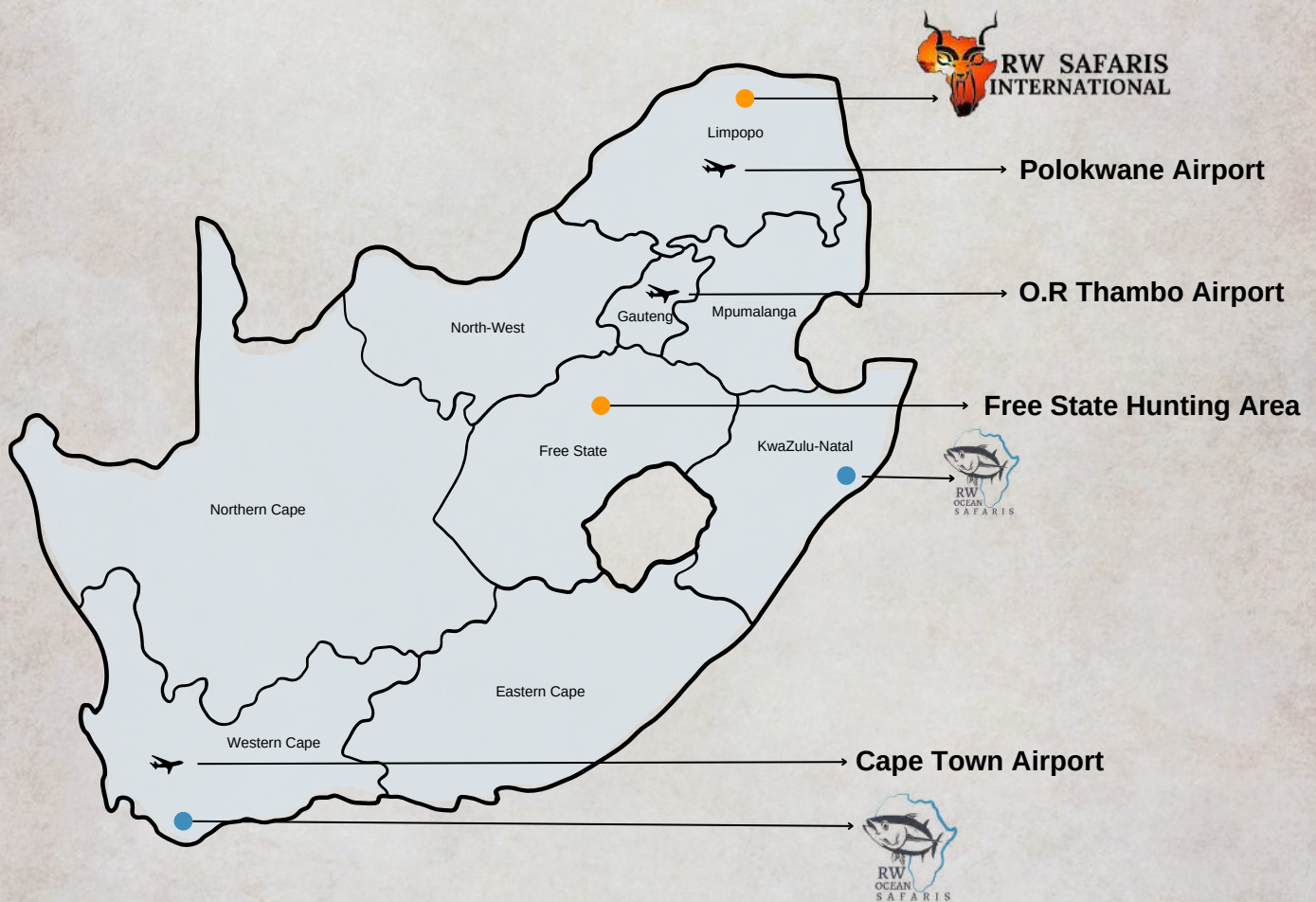
At RW Safaris we take great pride in utilizing our life-long gained knowledge and experience onto our great love and commitment towards nature conservation. We strive to be unique, apart from other safaris you will spend time around the campfire as well as one-on-one hunting with the owners and outfitter.

We go the extra mile to ensure that we meet all of our clients needs for a Safari of a lifetime. We aim at starting a journey with clients and finishing it off as life long friends to enjoy a lifetime of African adventures together.



Our Location

We are located in the Limpopo province in the most northern part of South Africa, with multiple hunting areas across Southern Africa.



Travelling to RW Safaris International leaves you with two options. We are situated 520 kilometers from Johannesburg (OR Thambo airport) which is a five hour drive to our main lodge or a connecting flight which will leave you with a short two hour drive from Polokwane Airport.

Meet our crew



Rick Wolvaardt

**DIRECTOR | OWNER | FOUNDER | OUTFITTER |
PROFESSIONAL HUNTER**



Klarissa Frauendorf

**DIRECTOR | OWNER | HOSTESS |
PROFESSIONAL HUNTRESS**

Our story

RW Safaris International is owned and operated by us, Rick & Klarissa who dedicated our lives to nature and conservation. Rick is a 4th generation hunter and outfitter has been running his own operation for over 9 years of which Klarissa 2nd generation huntress has been part for the past 4 years. We are a young couple who takes great pride in what we do and we will go the extra mile to ensure that our clients have the safari that they deserve.

Meet our crew



Robbie Guthrie

PROFESSIONAL HUNTER



Douglas

K9 TRACKER



Leo von Reiche

PROFESSIONAL HUNTER



Buddy Manners

**US AMBASSADOR |
RUSTIC OAK TAXIDERMIST**



Briley Snowden

**US AMBASSADOR | PROFESSIONAL PREDATOR
HUNTER**



Mark Powell

**US AMBASSADOR | COUNTRY ARTIST
OUTLAWS & LEGENDS | OWNER 7 KEYS LODGE**

Meet our crew



Jimmy Barbarossa

US AMBASSADOR | AVID BOW HUNTER



Doug Baker

CANADIAN AMBASSADOR



*Nick & Megan
Green*

US AMBASSADORS | GREENS PLUMBING



Jeppe N. Madsen

**DANISH AMBASSADOR |
FIRST CLASS TROPHY TAXIDERM**



Anders Enochsson

SWEDISH AMBASSADOR



David Berner

AUSTRALIAN AMBASSADOR

Meet our crew



Owen

TRADITIONAL CHEF



Alko

TRADITIONAL CHEF



Pilane

TRACKER | SKINNER



Kuda

TRACKER | SKINNER



Carlson

TRACKER | SKINNER



James

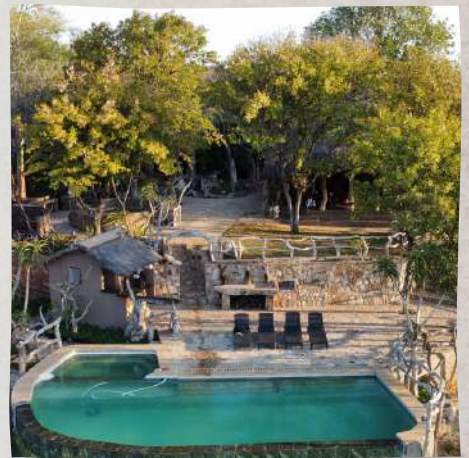
TRACKER | SKINNER

Stay with us

At RW Safaris we strive to make our clients feel at home every step of the way. Our main lodge is situated on the banks of the mighty Sandriver with beautiful picturesque views that serves as the perfect place to peacefully have your morning coffee or to enjoy a well-deserved sun downer gazing over the African horizon after a successful day of hunting. Our lodge consists of 5 units with en-suite facilities, an infinity pool overlooking the Sandriver, a lounge, barbeque area and dining area. All of our meals are prepared by our Traditional chefs with over 25 years of experience and our friendly staff will always be of your assistance.



Stay with us



Information

Daily rates includes:

- All inclusive accommodation, including all meals
- All beverages, including alcoholic beverages
- Wi-Fi
- Daily laundry services
- Services of a qualified professional hunter
- Services of a traditional chef
- Services of skimmers & trackers
- Transport of trophies to taxidermy
- Transport within hunting concessions
- Pick up & drop off at Polokwane airport

Daily Rates:

- 1:1 - \$ 350 per day
One client : One Professional hunter
- 2:1 - \$ 250 per day
Two clients : One Professional hunter
- Observer - \$ 170 per day

Daily rates excludes:

- All flights (International & Domestic)
- Hunting permits
- Trophy fees on hunted/ wounded animals.
- Transport to and from OR Tambo airport (Available at \$750 per group)
- Tips & Gratuities
- All Taxidermy expenses
- Rifle rent. \$ 40 Rifle rent per rifle per day. 2 x .308 paired with Leupold optics (ideal for plains game hunting) **OR** \$ 60 Rifle rent per day 1 x .416 paired with Swarovski optic (ideal for big/dangerous game hunting)

Information

Tips & Gratuities Guideline

- Professional Hunter - \$100 per day / Hunting Couple
- Tracker - \$ 20 per day
- Skinner - \$ 10 to \$ 15 per day
- Camp Staff (Chef, cleaners, security) \$ 50 per day / per hunting couple

Please note that this is only a guideline and tips/gratuities will be payable in cash upon settling of bill.



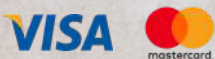
Information

Travelling to South Africa

- If you are a visitor from UK, Australia, Japan, the USA, Finland, Germany, Sweden, or Western Europe you do not require a visa to enter South Africa. If you are a visitor that is not entitled to an entry permit, you must arrange a visa at the South African Embassy that is found in most countries. Upon arrival, a free entry permit will be issued that is valid for 90 days. Make sure your passport is still valid for 6 months or longer, with at least two blank pages available.
- Please take note that no vaccine is required to enter South Africa.

Safari Payments

- To confirm your booking and secure your dates a deposit of 50% of accommodation or hunting package is required. The outstanding balance of the Safari is payable after the Safari is completed.
- We accept wire transfers, cash as well as credit cards as payment. (Please note that credit card payments will incur a 4% surcharge)



- There will be no refunds on cancellations made later than 9 months prior to your Safari.
- Any wounded animals is regarded as a kill and the full trophy fee will be charged.

Information

What's the weather like?

Our climate and average weather year round in Musina, the summers are long, hot, humid, and partly cloudy and the winters are short, cool, dry, and clear.

Summer:

Our Summer months are from mid-October to March, where we experience temperatures between 86 degrees Fahrenheit to 104 degrees Fahrenheit. This is also our monsoon season.

Fall:

Our Fall months are from April to mid-May, where we experience temperatures between 82 degrees Fahrenheit to 95 degrees Fahrenheit.

Winter:

Our Winter months are from mid-May to August, where we experience temperatures between 50 degrees Fahrenheit to 80 degrees Fahrenheit.

Spring:

Our Spring months are from August to Mid-October, where we experience temperatures between 80 degrees Fahrenheit to 95 degrees Fahrenheit.



Packing List

Rifle Hunters:

- Laundry service is done daily in camp
- 1 x Lightweight boots
- Short gaiters for your hunting boots
- 1 x Warm jacket and fleece
- 1 x Hunting jackets
- 3 x Hunting Shirts (Khaki/Green/Camo)
- 3 x Pants (Cotton Khaki/Green/Camo)
- 1 x 360 Hunting hat
- 3 x Sets of Underwear and socks (Daily Laundry Service)
- 1 x rain gear
- Comfortable clothing for relaxing at your camp
- Hard gun case (Approved by Airline)
- Belt bullet pouch
- 40 x rounds for your rifle

Bow Hunters:

- Laundry service is done daily in camp
- 1 x Lightweight boots
- Short gaiters for your hunting boots
- 3 x Hunting Shirts (Khaki/Green/Camo)
- 3 x Hunting Pants (Cotton Khaki/Green/Camo)
- 1 x 360 hunting hat
- 3 x Sets of Underwear and socks
- 1 x Warm jacket and fleece
- 1 x Rain gear
- Comfortable clothing for relaxing at your camp
- Bow and Bow case
- No less than 12x arrows and broadheads
- Trigger/release
- Gloves
- Leafy suit

Miscellaneous



Binoculars



**Sunglasses
&
Sunscreen**



Camera



Chargers



Flashlight

Information

Rifles

Rifles in 7mm to .308 caliber ranges with a good set of optics for plains game hunting are ideal. The hunter must bring what he/she feels comfortable with. The minimum caliber for Dangerous Game is .375 but any larger calibers will do the job e.g .458 and .416.

Travelling with my rifle

A US 4457 Customs Form must be acquired and filled out before departure. Then upon arrival, once you collected your baggage from the carousel proceed to the airline's baggage counter to collect your rifle. Once you have cleared customs proceed to the South African Police Service's gun control counter and fill out the South African Police Service 520 in BLACK INK. Preferably pre-fill out this form. SAP will then issue you with a temporary import permit that must be kept safe until you leave the country.

Please call the airline in advance for most of them have their own Formalities for carrying weapons. We would prefer a padded hard shell plastic or metal case that locks.

Shooting practice

What shooting practice must I do?

Speed and Accuracy are very important when hunting in Africa. Most Professional Hunters use shooting sticks. Best shooting practice would be from shooting Sticks or from a kneeling or sitting position.

Rifle Range

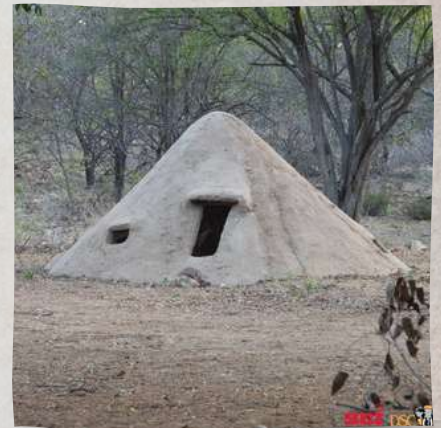


Information

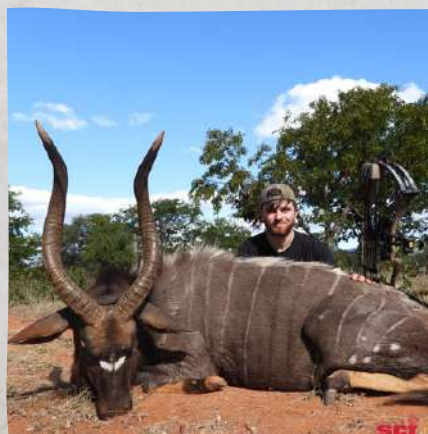
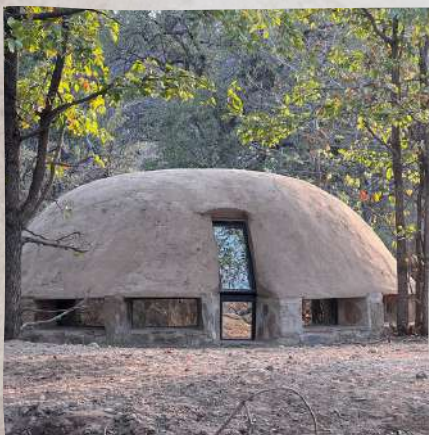
Bow Hunting

At RW Safaris International we have a very high standard of hunting ethics and we only hunt with rifle by means of a walk & stalk technique.

For our bow-hunting clients we have 4 pit blinds overlooking man-made watering holes as well as 4 tree stands as well as 2 elevated box-stands overlooking natural springs.



The average shot to be taken from our pit blinds as well as tree stands and elevated box stands can be anything from 25 yards . A minimum of 45 pounds draw weight is required for bow hunting.











Pricelist



Subject to license approval



			
Vervet Monkey		\$ 75	€ 75
Baboon		\$ 245	€ 245
Jackal		\$ 250	€ 250
Porcupine		\$ 245	€ 245
Large Spotted Genet		\$ 650	€ 650
Common Duiker		\$ 400	€ 400
Red Duiker		\$ 1 850	€ 1 850
Steenbuck		\$ 550	€ 550
Klipspringer		\$ 1 850	€ 1 850
Sharpe's Grysback		\$ 1 950	€ 1 950
Lechwe - Red		\$ 1 850	€ 1 850
Honey Badger		\$ 1 350	€ 1 350
African Civet		\$ 950	€ 950
Warthog		\$ 450	€ 450
Common Springbuck		\$ 600	€ 600
Copper Springbuck		\$ 950	€ 950
White Springbuck		\$ 850	€ 850
Black Springbuck		\$ 750	€ 750
Common Blesbuck		\$ 650	€ 650
White Blesbuck		\$ 950	€ 950
Impala		\$ 420	€ 420
Black Impala		\$ 1 850	€ 1 850
Mountain Reedbuck		\$ 1 250	€ 1 250
Bushpig		\$ 850	€ 850

Pricelist



Subject to license approval



Ostrich	\$ 700	€ 700
Brown Hyena	\$ 1 500	€ 1 500
Spotted Hyena	\$ 4 500	€ 4 500
Limpopo Bushbuck	\$ 1 700	€ 1 700
Nyala	\$ 2 500	€ 2 500
Burchell's Zebra	\$ 1 300	€ 1 300
Blue Wildebeest	\$ 1 250	€ 1 250
Golden Wildebeest	\$ 3 000	€ 3 000
Red Hartebeest	\$ 1 350	€ 1 350
Oryx / Gemsbuck	\$ 1 500	€ 1 500
Roan	\$ 6 000	€ 6 000
Waterbuck	\$ 2 200	€ 2 200
Greater Kudu	\$ 2 750	€ 2 750
Cape Eland	\$ 2 950	€ 2 950
Livingston Eland	\$ 3 500	€ 3 500
Giraffe	\$ 3 000	€ 3 000
Black Giraffe	\$ 4 500	€ 4 500
Crocodile <13 ft	\$ 3 850	€ 3 850
Crocodile >13ft	\$ 6 500	€ 6 500
Sable	\$ 4 400	€ 4 400
Tsessebe	\$ 2 800	€ 2 800
Cape Buffalo <40"	\$ 9 500	€ 9 500
Cape Buffalo >40"	\$ 11 500	€ 11 500
Hippopotamus	\$ 11 500	€ 11 500



Safari Combo's

This is all inclusive safaris which means that; Accommodation, meals, beverages, daily laundry services, wi-fi, services of a qualified professional hunter, trackers as well as field preparations of trophies are included.

Plainsgame Safari

1 x Impala
1 x Blue Wildebeest
1 x Zebra
1 x Duiker

\$ 3,950



Ultimate Safari

1 x Greater Kudu
1 x Nyala
1 x Blue Wildebeest
1 x Impala
1 x Baboon

\$ 9,500



Spiral Slam Safari

1 x Cape Eland
1 x Greater Kudu
1 x Bushbuck
1 x Nyala

\$ 10,000



Buffalo & Sable Safari

1 x Cape Buffalo
1 x Sable
1 x Impala
1 x Baboon

\$ 14,500



Extra Activities

Mapungubwe



\$200.00
per person

Join us to for a day trip filled with scenic landmarks, Baobab trees, unique riverine forest and sandstone formations in the Mapungubwe World Heritage site. Experience the beautiful view of 2 mighty rivers meeting 3 different countries This beautiful nature reserve is the perfect place to put your camera lens to the test with beautiful landscapes as well as wild animals such as Elephant, Zebra, Eland, Kudu, Leopard, Lion and much more.

Kruger Park



\$950.00
per person

Kruger National Park, in northeastern South Africa, is one of Africa's largest game reserves. Its high density of wild animals includes the Big 5: lions, leopards, rhinos, elephants and buffalos. Hundreds of other mammals make their home here, join us on a 2 day 1 night trip to the Northern parts of the Kruger park where we will be spending a night in one of Kruger National Parks' beautiful Bush lodges. Don't forget to bring your best camera lens for this trip.

Photography



Included
with Safari

Join us on an adventure through the lens with our photographic safaris and get the opportunity to capture as much of South Africa as you can to cherish for a life time.

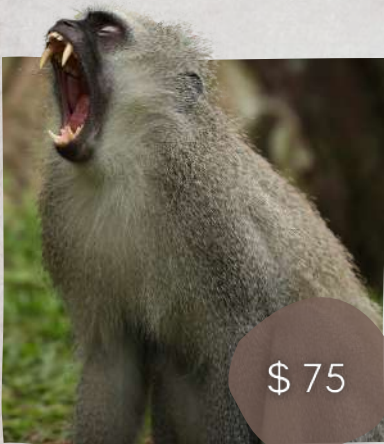
Tshipise



\$50.00
per person

The famous Tshipise (Something Warm) Koppie towers protectively over the Resort with giant Baobabs dotting the Landscape. The Resort's warm water pools as well as indoor Rheumatic bath is the perfect place to relax on our cold days.

Visual Pricelist



\$ 75

VERVET MONKEY



\$ 245

BABOON



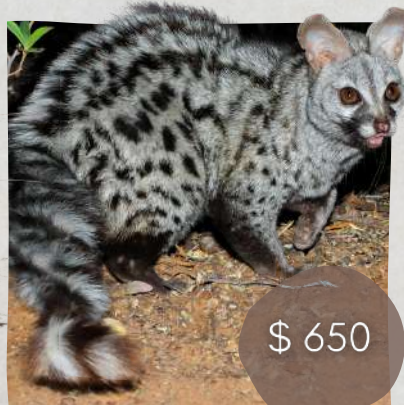
\$ 250

JACKAL



\$ 245

PORCUPINE



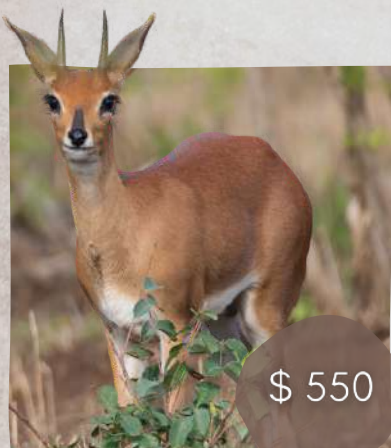
\$ 650

GENET



\$ 400

DUIKER



\$ 550

STEENBUCK



\$ 1,850

KLIPSPRINGER



\$ 1,950

SHARPE'S GRYSBOK

Visual Pricelist



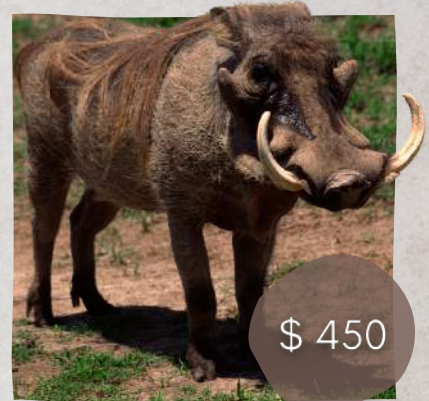
\$ 1,350

HONEY BADGER



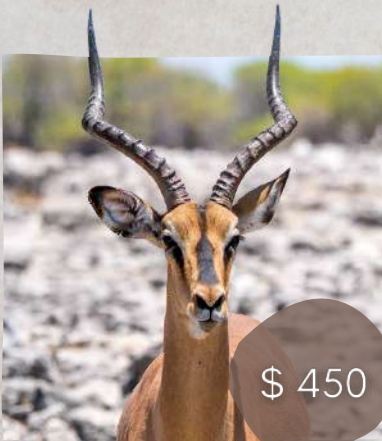
\$ 950

AFRICAN CIVET



\$ 450

WARTHOG



\$ 450

IMPALA



\$ 1,250

MOUNTAIN REEDBUCK



\$ 850

BUSHPIG



\$ 700

COMMON BLESBUCK



\$ 1,500

BROWN HYENA



\$ 4,500

SPOTTED HYENA

Visual Pricelist



\$ 1,700

BUSHBUCK



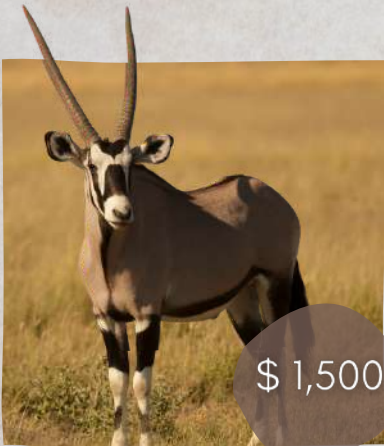
\$ 2,500

NYALA



\$ 1,300

ZEBRA



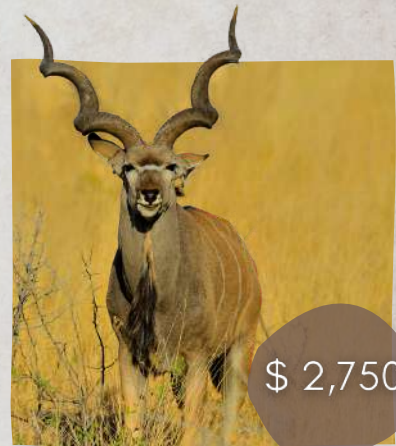
\$ 1,500

GEMSBUCK



\$ 2,200

WATERBUCK



\$ 2,750

GREATER KUDU



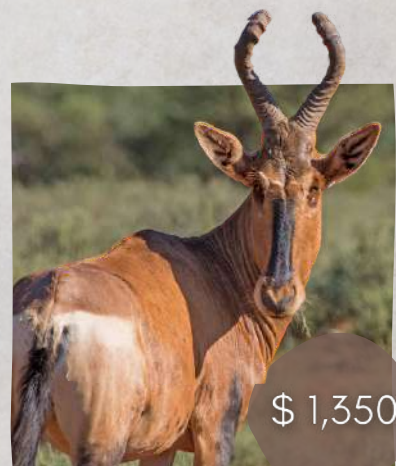
\$ 1,250

BLUE WILDEBEEST



\$ 3,000

GOLDEN WILDEBEEST



\$ 1,350

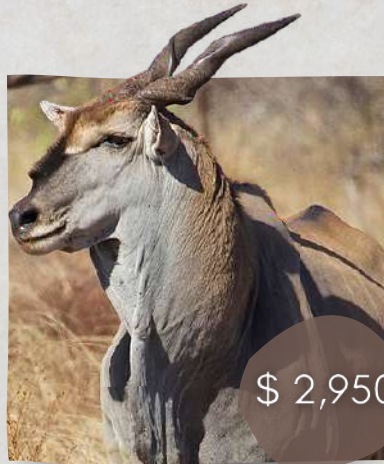
RED HARTEBEEST

Visual Pricelist



\$ 6,000

ROAN



\$ 2,950

ELAND



\$ 3,000

\$ 4,000

GIRAFFE



\$ 4,400

SABLE



\$ 2,800

TSESSEBE



\$ 3,850

\$ 6,500

CROCODILE



\$ 9,500

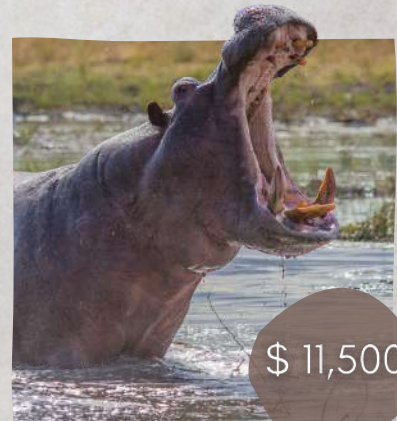
\$ 11,000

CAPE BUFFALO



P.O.R

LION



\$ 11,500

HIPPOTAMUS

Hunting Gallery



Hunting Gallery



Sable Gallery



47"



43"



42"



42"



44"

Buffalo Gallery



Contact us



+27 76 894 7144 **OR** +27 73 849 2479



rwsafarisinternational@gmail.com



www.rwsafarisinternational.co.za



Farm Dorothy MS254, Musina, 0900, Limpopo, South Africa

Find us on Social Media



**RW SAFARIS
INTERNATIONAL**

