



*Lets Hunt*  
**AFRICA**





# Welcome,

Welcome to RW Safaris International, nestled in the serene Limpopo Valley of South Africa, where our lodge is surrounded by magnificent baobab trees and the tranquil African bushveld. We offer an exceptional hunting experience with over 25 species available in carefully selected areas renowned for top-quality trophies.

At RW Safaris, we blend a lifetime of knowledge and passion for nature conservation into every safari.

What sets us apart is our dedication to providing a unique experience where you not only hunt but also share moments around the campfire and engage in one-on-one experiences with the owner and outfitter himself.

We are committed to exceeding our clients expectations, ensuring each safari is tailored to meet their needs and create memories that last a lifetime. Our goal is not just to provide a safari but to embark on a journey with our clients, forging friendships that extend beyond the hunt, and sharing in a lifetime of African adventures together.

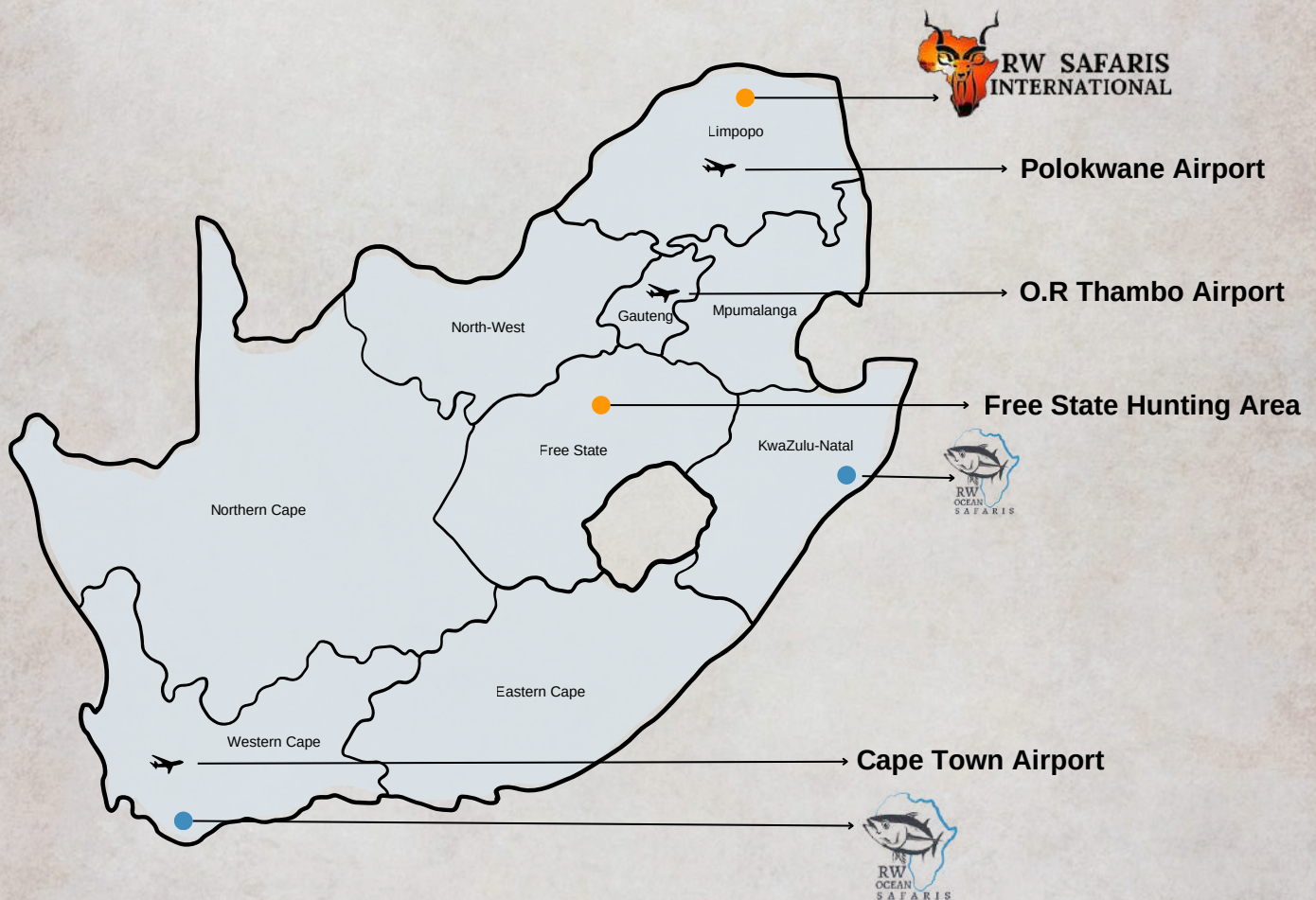
Join us at RW Safaris International for a safari experience unlike any other





# Our Location

We are located in the Limpopo province in the most northern part of South Africa, with multiple hunting areas across Southern Africa.



Travelling to RW Safaris International leaves you with two options. We are situated 520 kilometers from Johannesburg (OR Thambo airport) which is a five hour drive to our main lodge or a connecting flight which will leave you with a short two hour drive from Polokwane Airport.



# Meet our crew



*Rick Wolvaardt*

**DIRECTOR | OWNER | FOUNDER | OUTFITTER |  
PROFESSIONAL HUNTER**

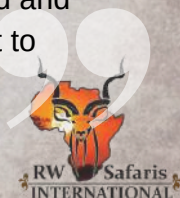


*Klarissa Frauendorf*

**DIRECTOR | OWNER | HOSTESS |  
PROFESSIONAL HUNTRESS**

## “ Our story

RW Safaris International is proudly owned and operated by Rick and Klarissa, a passionate couple dedicated to nature and conservation. Rick, a fourth-generation hunter and outfitter, has been leading his own operation for over 9 years, while Klarissa, a second-generation huntress, has been an integral part of the venture for the past 5 years. Together, they bring a youthful energy and deep commitment to providing exceptional safaris. They take immense pride in their work, striving to exceed client expectations by going the extra mile to ensure every safari is unforgettable and tailored to their clients' desires. Their combined expertise and dedication create a personalized and enriching experience that reflects their love for the African wilderness and their commitment to sustainable hunting practices.





# Meet our crew



*Lukas vd Merwe*

PROFESSIONAL HUNTER



*Douglas*

K9 TRACKER



*Storm Joubert*

PROFESSIONAL HUNTER



*Leo von Reiche*

PROFESSIONAL HUNTER



*Buddy Manners*

US AMBASSADOR |  
OWNER RUSTIC OAK TAXIDERMY



*Mark Powell*

US AMBASSADOR | COUNTRY ARTIST  
OUTLAWS & LEGENDS | OWNER 7 KEYS LODGE



# Meet our crew



*Jimmy Barbarossa*

US AMBASSADOR | AVID BOW HUNTER



*Doug Baker*

CANADIAN AMBASSADOR



*Nick & Megan  
Green*

US AMBASSADORS | GREENS PLUMBING  
MILITARY VETERAN



*Jeppe N. Madsen*

DANISH AMBASSADOR |  
FIRST CLASS TROPHY TAXIDERMY



*Anders Enochsson*

SWEDISH AMBASSADOR



*Briley Snowden*

US AMBASSADOR | PROFESSIONAL PREDATOR  
HUNTER



# Meet our crew



*David Berner*  
AUSTRALIAN AMBASSADOR



*Owen*  
TRADITIONAL CHEF



*Alko*  
TRADITIONAL CHEF



*Nonia*  
HOUSEKEEPER/CLEANER



*Pilane*  
TRACKER | SKINNER



*Carlson*  
TRACKER | SKINNER



*James*  
TRACKER | SKINNER



# Our Partners



## Develdt Shuttles

Develdt Shuttles and Airport Transfers, proudly owned and operated by Ruan and Elmi Wolvaardt, offers reliable, comfortable and personalised transport services.

Whether you're heading to the airport, a lodge, or a private destination. With deep roots in the hunting industry, Develdt Shuttles ensures a smooth and professional journey every time. All with the warmth and integrity you'd expect from a family-run service.



## Craig Boddington Endorsed Outfitter

We are honored to be endorsed by Craig Boddington Endorsed Outfitters (CBEO), a testament to our commitment to ethical hunting practices and wildlife conservation. We are grateful for the recognition and proud to align our operation with CBEO's values. This endorsement underscores RW Safaris' dedication to providing exceptional hunting experiences while prioritizing sustainability and the preservation of natural habitats. Our relationship with CBEO reflects our mutual passion for promoting responsible hunting as a means to support conservation efforts worldwide.

## Safari Taxidermy

We cherish our longstanding partnership with Safari Taxidermy, spanning over 15 years. Safari Taxidermy is renowned for their commitment to preserving the essence of each hunting expedition through superior mounts and ornaments. They specialize in capturing the natural beauty of wild animals and birds with meticulous attention to detail, ensuring each finished product is a masterpiece worthy of display and admiration. Our collaboration with Safari Taxidermy enhances the overall experience for our clients, allowing them to proudly showcase the memories and trophies from their safari adventures with pride.



## First class trophy

We maintain a close personal relationship with First Class Trophy Taxidermy, Europe's largest taxidermy company. Leveraging their extensive expertise and buying power, we ensure access to the finest materials available, enabling us to deliver high-quality taxidermy mounts efficiently. This partnership guarantees our clients receive exceptional value for their investment, with each trophy mount crafted to perfection. We take pride in offering beautiful and enduring mounts that preserve the memories of our clients' hunting achievements for years to come.



**FIRST CLASS TROPHY**

*We create beautiful trophy mounts  
for proud hunters worldwide...*



# Stay with us

At RW Safaris, we prioritize ensuring our clients feel completely at ease throughout their stay. Our main lodge is ideally positioned on the banks of the majestic Sandriver, offering breathtaking views that are perfect for enjoying a tranquil morning coffee or a well-deserved sundowner after a successful day of hunting. The lodge features five units, each equipped with en-suite facilities, as well as amenities such as an infinity pool overlooking the river, a comfortable lounge area, a barbecue spot, and a spacious dining area. Our meals, crafted by traditional chefs with over 25 years of experience, promise a delicious taste of local cuisine. Our friendly and attentive staff are always on hand to provide assistance, ensuring every aspect of your safari experience is memorable and enjoyable.





# Stay with us





# Stay with us





# Information

## Daily rates includes:

- All inclusive accommodation, including all meals
- All beverages, including alcoholic beverages
- Wi-Fi
- Daily laundry services
- Services of a qualified professional hunter
- Services of a traditional chef
- Services of skimmers & trackers
- Transport of trophies to taxidermy
- Transport within hunting concessions

## Daily Rates:

- 1:1 - \$ 350 per day  
One client : One Professional hunter
- 2:1 - \$ 250 per day  
Two clients : One Professional hunter
- Observer - \$ 170 per day

## Daily rates excludes:

- All flights (International & Domestic)
- Hunting permits
- Trophy fees on hunted/ wounded animals.
- Transport to and from OR Thambo airport (Available at \$950 per group)
- Transport to and from Polokwane airport (Available at \$450 per group)
- Tips & Gratuities
- All Taxidermy expenses
- Rifle rent. \$ 40 Rifle rent per rifle per day. 2 x .308 paired with Leupold optics (ideal for plains game hunting) **OR** \$ 60 Rifle rent per day 1 x .416 paired with Swarovski optic (ideal for big/dangerous game hunting)
- You are allowed to bring your own rifles to complete your Safari with.  
(Please let us know in advance)



# Information

## Tips & Gratuities Guideline

- Professional Hunter - \$50- \$100 per day / Hunting Couple
- Tracker - \$15 -\$20 per day
- Skinner - \$ 10 to \$ 15 per day
- Camp Staff (Chef, cleaners, security) \$ 50 per day / per hunting couple

*Please note that this is only a guideline and tips/gratuities will be payable in cash upon settling of bill.*





# Information

## Travelling to South Africa

- If you are a visitor from UK, Australia, Japan, the USA, Finland, Germany, Sweden, or Western Europe you do not require a visa to enter South Africa. If you are a visitor that is not entitled to an entry permit, you must arrange a visa at the South African Embassy that is found in most countries. Upon arrival, a free entry permit will be issued that is valid for 90 days. Make sure your passport is still valid for 6 months or longer, with at least two blank pages available.
- Please take note that no vaccine is required to enter South Africa.

## Safari Payments

- To confirm your booking and secure your dates a deposit of 50% of accommodation or hunting package is required. The outstanding balance of the Safari is payable after the Safari is completed.
- We accept wire transfers, cash as well as credit cards as payment. (Please note that credit card payments will incur a 4% surcharge)



- There will be no refunds on cancellations made later than 9 months prior to your Safari.
- Any wounded animals is regarded as a kill and the full trophy fee will be charged.



# Information

## What's the weather like?

Our climate and average weather year round in Musina, the summers are long, hot, humid, and partly cloudy and the winters are short, cool, dry, and clear.

### **Summer:**

Our Summer months are from mid-October to March, where we experience temperatures between 86 degrees Fahrenheit to 104 degrees Fahrenheit. This is also our monsoon season.

### **Fall:**

Our Fall months are from April to mid-May, where we experience temperatures between 82 degrees Fahrenheit to 95 degrees Fahrenheit.

### **Winter:**

Our Winter months are from mid-May to August, where we experience temperatures between 50 degrees Fahrenheit to 80 degrees Fahrenheit.

### **Spring:**

Our Spring months are from August to Mid-October, where we experience temperatures between 80 degrees Fahrenheit to 95 degrees Fahrenheit.





# Packing List

## Rifle Hunters:

- Laundry service is done daily in camp
- 1 x Lightweight boots
- Short gaiters for your hunting boots
- 1 x Warm jacket and fleece
- 1 x Hunting jackets
- 3 x Hunting Shirts (Khaki/Green/Camo)
- 3 x Pants (Cotton Khaki/Green/Camo)
- 1 x 360 Hunting hat
- 3 x Sets of Underwear and socks (Daily Laundry Service)
- 1 x rain gear
- Comfortable clothing for relaxing at your camp
- Hard gun case (Approved by Airline)
- Belt bullet pouch
- 40 x rounds for your rifle

## Bow Hunters:

- Laundry service is done daily in camp
- 1 x Lightweight boots
- Short gaiters for your hunting boots
- 3 x Hunting Shirts (Khaki/Green/Camo)
- 3 x Hunting Pants (Cotton Khaki/Green/Camo)
- 1 x 360 hunting hat
- 3 x Sets of Underwear and socks
- 1 x Warm jacket and fleece
- 1 x Rain gear
- Comfortable clothing for relaxing at your camp
- Bow and Bow case
- No less than 12x arrows and broadheads
- Trigger/release
- Gloves
- Leafy suit

## Miscellaneous



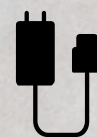
**Binoculars**



**Sunglasses  
&  
Sunscreen**



**Camera**



**Chargers**



**Flashlight**



# Information

## Rifles

Rifles in 7mm to .308 caliber ranges with a good set of optics for plains game hunting are ideal. The hunter must bring what he/she feels comfortable with. The minimum caliber for Dangerous Game is .375 but any larger calibers will do the job e.g .458 and .416.

## Travelling with my rifle

A US 4457 Customs Form must be acquired and filled out before departure. Then upon arrival, once you collected your baggage from the carousel proceed to the airline's baggage counter to collect your rifle. Once you have cleared customs proceed to the South African Police Service's gun control counter and fill out the South African Police Service 520 in BLACK INK. Preferably pre-fill out this form. SAP will then issue you with a temporary import permit that must be kept safe until you leave the country.

Please call the airline in advance for most of them have their own Formalities for carrying weapons. We would prefer a padded hard shell plastic or metal case that locks.

## Shooting practice

What shooting practice must I do?

Speed and Accuracy are very important when hunting in Africa. Most Professional Hunters use shooting sticks. Best shooting practice would be from shooting Sticks or from a kneeling or sitting position.



# Rifle Range



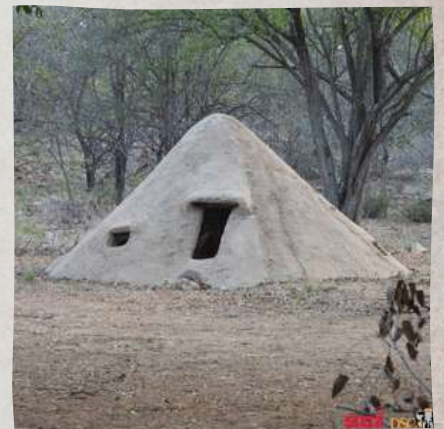


# Information

## Bow Hunting

At RW Safaris International we have a very high standard of hunting ethics and we only hunt with rifle by means of a walk & stalk technique.

For our bow-hunting clients we have 4 pit blinds overlooking man-made watering holes as well as 4 tree stands as well as 2 elevated box-stands overlooking natural springs.



The average shot to be taken from our pit blinds as well as tree stands and elevated box stands can be anything from 15 - 30 yards. A minimum of 45 pounds draw weight is required for bow hunting.





# Extra Activities

## Mapungubwe



\$150,00  
per person

Join us to for a day trip filled with scenic landmarks, Baobab trees, unique riverine forest and sandstone formations in the Mapungubwe World Heritage site. Experience the beautiful view of 2 mighty rivers meeting 3 different countries. This beautiful nature reserve is the perfect place to put your camera lens to the test with beautiful landscapes as well as wild animals such as Elephant, Zebra, Eland, Kudu, Leopard, Lion and much more.

## Kruger Park



\$400,00  
per person  
per day

Kruger National Park, in northeastern South Africa, is one of Africa's largest game reserves. Its high density of wild animals includes the Big 5: lions, leopards, rhinos, elephants and buffalos. Hundreds of other mammals make their home here, join us on an unforgettable trip to the famous Kruger National Park. Don't forget to bring your best camera lens for this trip.

## Photography



Included  
with Safari

Join us on an adventure through the lens with our photographic safaris and get the opportunity to capture as much of South Africa as you can to cherish for a life time.

## Tshipise



\$50.00  
per person

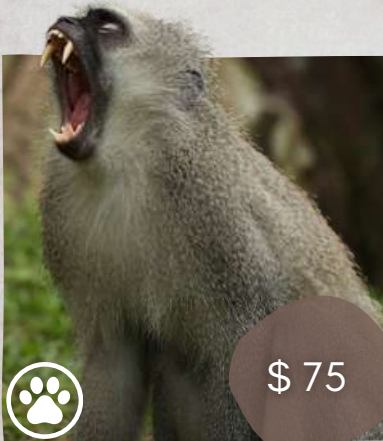
The famous Tshipise (Something Warm) Koppie towers protectively over the Resort with giant Baobabs dotting the Landscape. The Resort's warm water pools as well as indoor Rheumatic bath is the perfect place to relax on our cold days.



# Visual Pricelist

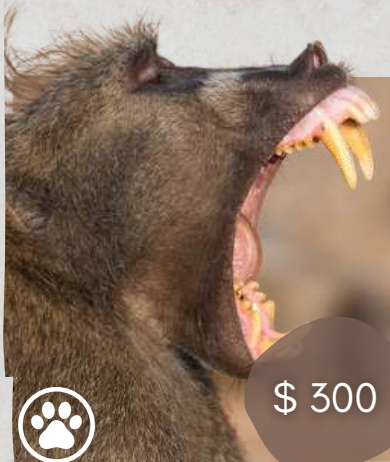
IN US DOLLAR

SUBJECT TO PERMIT APPROVAL 



\$ 75

VERVET MONKEY



\$ 300

BABOON



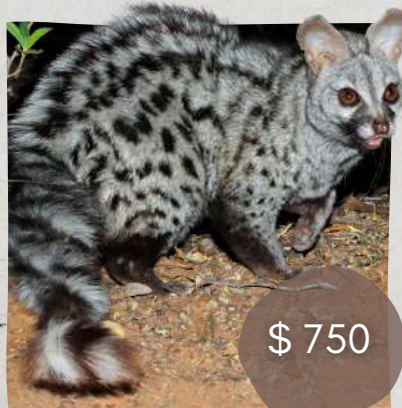
\$ 300

JACKAL



\$ 300

PORCUPINE



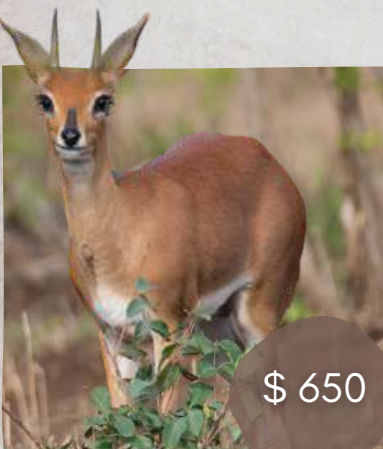
\$ 750

GENET



\$ 400

DUIKER



\$ 650

STEENBUCK



\$ 1,950

KLIPSPRINGER



\$ 2,500

SHARPE'S GRYSBOK



# Visual Pricelist

IN US DOLLAR

SUBJECT TO PERMIT APPROVAL 



\$ 2,200

RED DUIKER



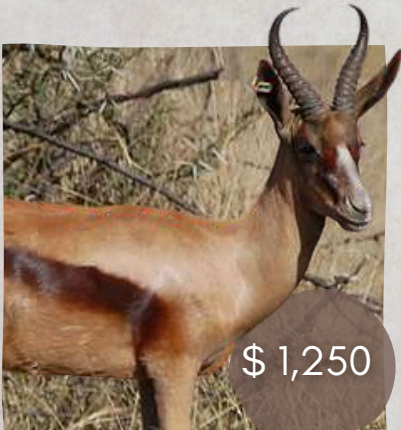
\$ 750

COMMON  
SPRINGBOK



\$1,650

WHITE SPRINGBOK



\$ 1,250

COPPER SPRINGBOK



\$ 1,350

BLACK SPRINGBUCK



\$ 750

COMMON BLESBUCK



\$ 950

WHITE BLESBOK



\$ 1,850

BLACK IMPALA



\$ 1,950

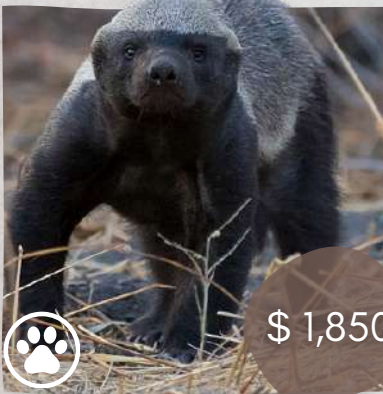
LECHWE



# Visual Pricelist

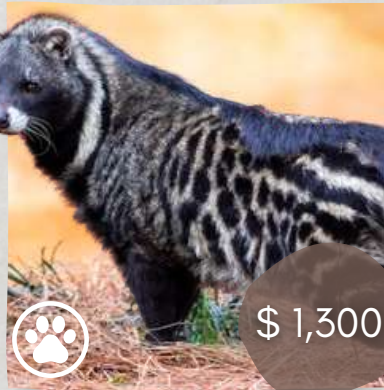
IN US DOLLAR

SUBJECT TO PERMIT APPROVAL 



\$ 1,850

HONEY BADGER



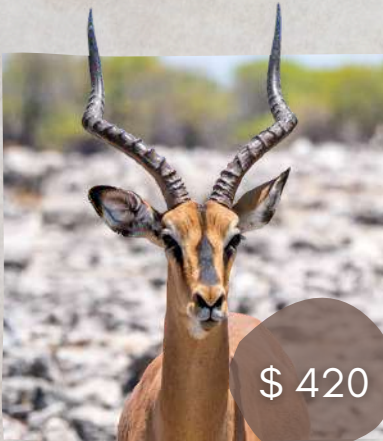
\$ 1,300

AFRICAN CIVET



\$ 450

WARTHOG



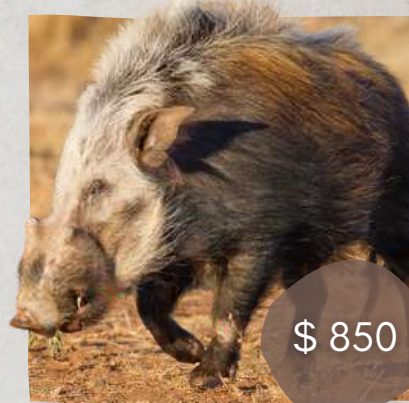
\$ 420

IMPALA



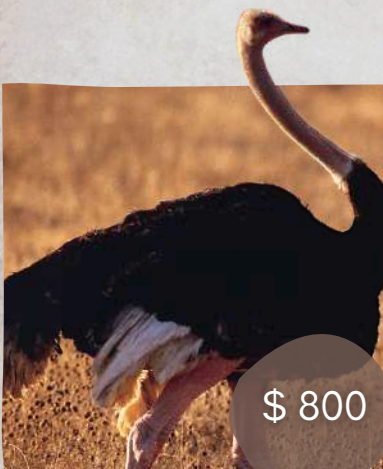
\$ 1,500

MOUNTAIN REEDBUCK



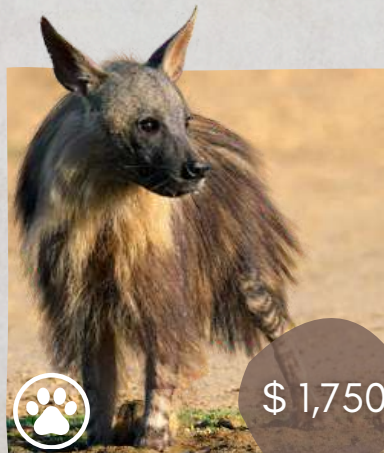
\$ 850

BUSHPIG



\$ 800

OSTRICH



\$ 1,750

BROWN HYENA



\$ 4,500

SPOTTED HYENA



# Visual Pricelist

IN US DOLLAR

SUBJECT TO PERMIT APPROVAL 



\$ 1,800

BUSHBUCK



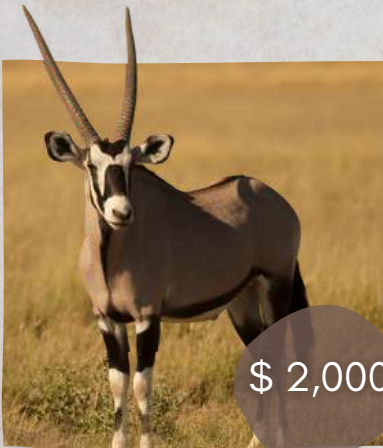
\$ 2,500

NYALA



\$ 1,400

ZEBRA



\$ 2,000

GEMSBUCK



\$ 2,450

WATERBUCK



\$ 3,500

GREATER KUDU



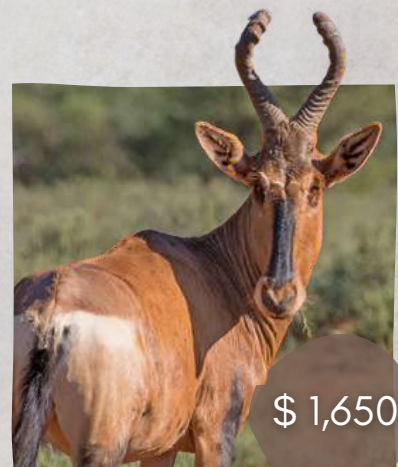
\$ 1,500

BLUE WILDEBEEST



\$ 3,250

GOLDEN WILDEBEEST



\$ 1,650

RED HARTEBEEST



# Visual Pricelist

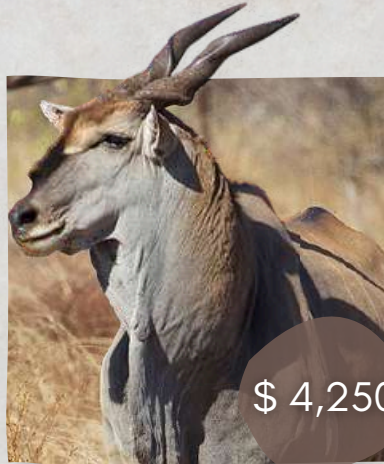
IN US DOLLAR

SUBJECT TO PERMIT APPROVAL 



\$ 7,500

ROAN



\$ 4,250

ELAND



\$ 3,500

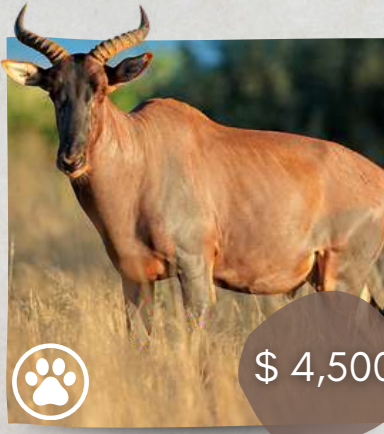
\$ 5,000

GIRAFFE



\$ 6,000

SABLE



\$ 4,500

TSESSEBE



\$ 4,500

P.O.R



CROCODILE



\$ 9,500

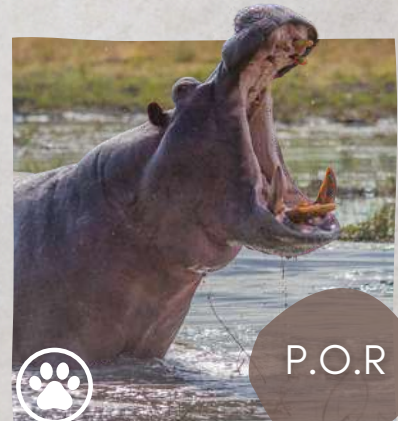
P.O.R

CAPE BUFFALO



P.O.R

LION



P.O.R

HIPPOPOTAMUS



# Hunting Gallery



59"



25 1/2"



14 1/2"



34 1/2"



37"



16"



15"





# Hunting Gallery





# Sable Gallery



47"



43"



42"



42"



44"



# Buffalo Gallery





# A piece of history

Rick is a 4th generation hunter and outfitter and has been gratefully influenced from a very young age by his father Johan Wolvaardt who was a well-known outfitter in the Limpopo province since 1978.

Rick was born in the local town Musina and he was raised on his father's hunting Ranches where his mother and father had their own outfit. He learned from a young age to live and breathe the African air.

At the age of six in 1999 Rick kicked off his hunting career by hunting his first warthog on foot, this ensured for his deep roots in the African Bushveld and he already knew at that young age that he never will quit hunting.

Since then it has been one hunting adventure after the other.

RW Safaris International is based on their privately owned, family operated hunting ranch in the Limpopo province of South Africa.

Rick is well-known by many fellow hunters in the area and across the world for his great knowledge of the bush as well as his outstanding hunting and tracking skills.

It has been his life long dream to guide hunters from across the world to experience hunting Africa, Rick has hunted & guided over 120 Buffalo, 24 Elephant and numerous other dangerous game as well as plains game animals in his career.

To this day he offers over 25 species to be hunted on 100,000 + acres in South Africa and he also offers free-ranging hunting concessions in Zimbabwe and Mozambique.



Rick's Grandfather. (Oupa Basie Wolvaardt)  
Sitting on a problem Elephant that he hunted in Zimbabwe in his younger days.



Rick's Father. (Johan Wolvaardt)  
Johan with two Cape Buffalo that charged him in along with two trackers.



Rick Wolvaardt at the age of 12 with his first Cape Eland that he hunted on foot.



# Contact us



+27 76 894 7144 **OR** +27 73 849 2479



[rwsafarisinternational@gmail.com](mailto:rwsafarisinternational@gmail.com)



[www.rwsafarisinternational.co.za](http://www.rwsafarisinternational.co.za)



Farm Dorothy MS254, Musina, 0900, Limpopo, South Africa

## Find us on Social Media



**RW SAFARIS  
INTERNATIONAL**



[www.rwsafarisinternational.co.za](http://www.rwsafarisinternational.co.za)